

# Alpha<sup>®</sup> Lighting

Your way of savings in the future



## ALPHA LED LINEAR SYSTEM LINEAR MODULAR SYSTEM





Production halls



Logistics facilities  
 and warehouses



**ALPHA LED LINEAR SYSTEM linear module lighting system - the highest standard in industrial LED lighting.**

Requirements on the lighting systems in different application sectors often represent a challenge when designing the lighting system.

Until now, it has often been necessary to have different lighting systems in order to achieve optimal light concept. Thanks to its diversity and exceptional construction solution it provides maximum flexibility and comfort so that all requirements on lighting in industrial and retail sectors are met.

Unlike many similar competitive systems, which are made of steel sheet ALPHA LED LINEAR SYSTEM is made of high-quality extruded aluminium and meets the highest requirements for overall design, low weight and high strength.

Thanks to its high luminous efficacy value of 170 lm/W you will achieve significant reduction in energy costs and effective return on investment.

**Product lines:**

## ALPHA LED LINEAR SYSTEM IP20

**Application:** Food industry (HACCP), markets.

## ALPHA LED LINEAR SYSTEM IP54

**Application:** Manufacturing areas with high levels of pollution and dust, e.g. large-capacity warehouses and logistics areas.

### ADVANTAGES:

- Self-supporting, highly mechanically resistant all-aluminium IK10 construction.
- High illumination quality with low glare level.
- JUST ONE CLICK system allows quick exchange of the individual modules with optics and interconnection of the carrying moulding aluminium profile without using any work tool.
- Fast and simple on-site installation significantly reduces total costs of the lighting system installation.
- Simple and fast repair in the event of failure.
- A wide range of optical systems and efficient modifications allows maximum variability when designing the light system.
- DALI system - Integrated lighting control sensor.

## TECHNICAL ADVANTAGES:

- The lighting and technical parameters of the luminaire meet the requirements of ČSN/STN EN 12464-1 standard.
- A ++ energy class.
- PCB modules ALPHA PCB DUOMMO MODULES with SAMSUNG, OSRAM LED chips.
- Simple interchangeability of the PCB module.
- Ambient temperature  $T_a +40^\circ \text{C}$ .
- Lifetime of 60,000 h/LM 80- IES TM-21-11

## MODULAR SCHEME:

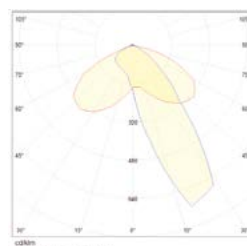
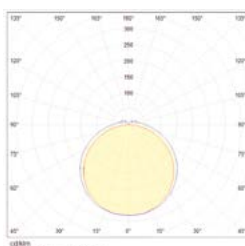
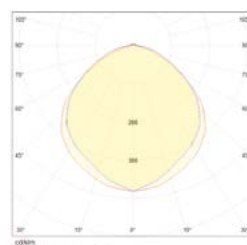
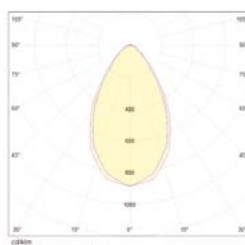
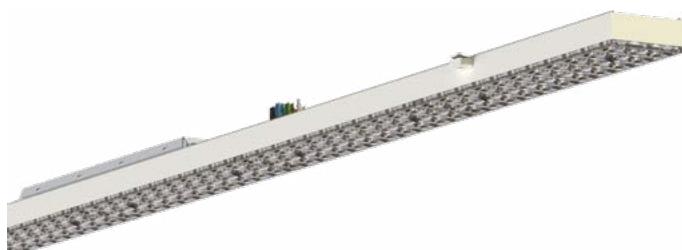
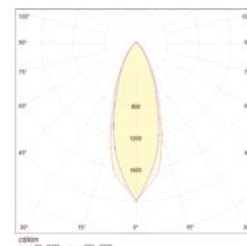
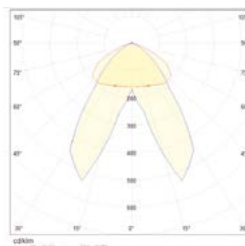
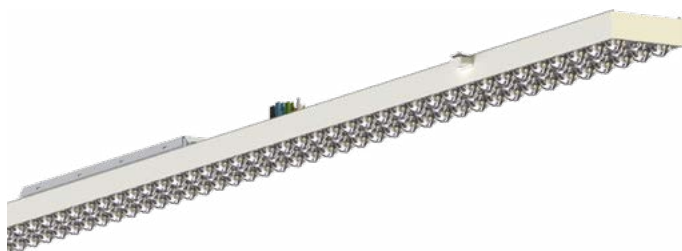


## BASIC TECHNICAL PARAMETERS OF THE LED MODULE:

Luminaire type	Total power input	Total luminous flux of the luminaire	Luminous efficacy of the luminaire	Module length
ALPHA LED LINEAR SYSTEM 57/1437	57 W	9 300 lm	163 lm/W	1437 mm
ALPHA LED LINEAR SYSTEM 75/1437	75 W	11 800 lm	163 lm/W	1437 mm

**Note:** The basic parameters are given at the chromaticity temperature of CCT 4000K (+/- 300K) and the colour rendering index Ra min. 80. At the chromaticity temperature of CCT 5000 (+/- 300K) and colour rendering index R<sub>a</sub> min. 80, the total luminous flux of the luminaire (lm) will be approximately 5% higher. Supply voltage 220V-240V/50Hz.

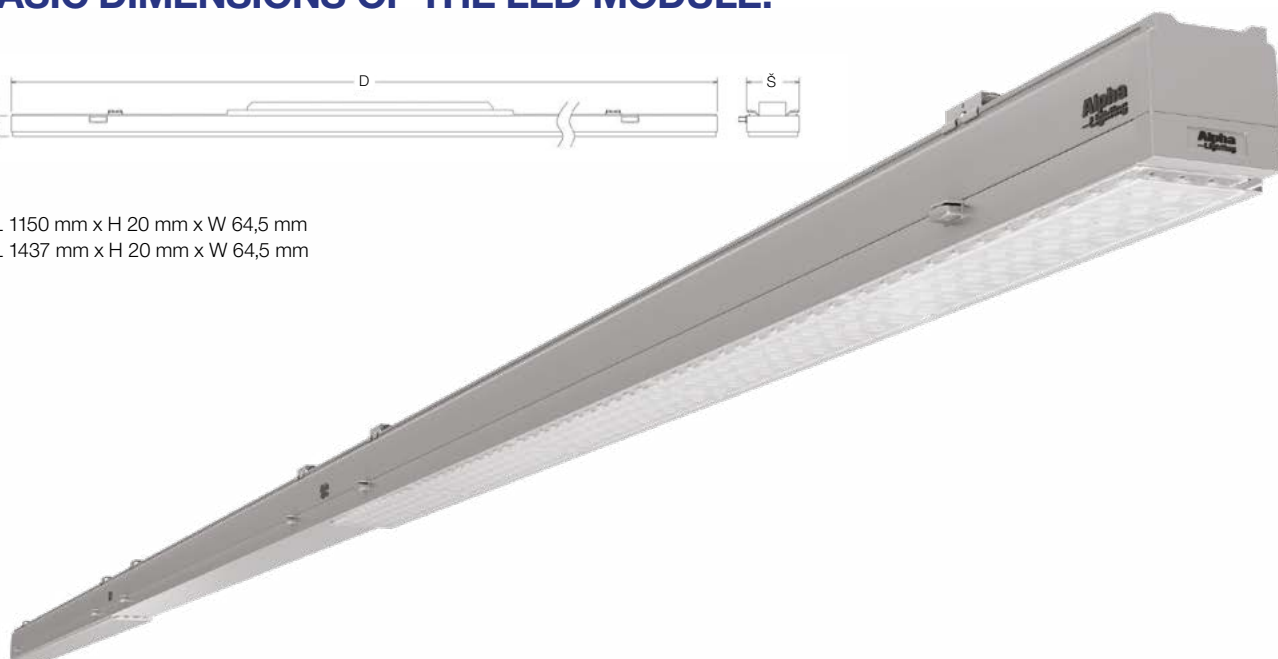
## MULTI OPTICAL SYSTEM WITH SYMMETRICAL BEAM ANGLE 30°, 60°, 90°, 120°, ASYMMETRIC OPTICS 25°:



## BASIC DIMENSIONS OF THE LED MODULE:



- L 1150 mm x H 20 mm x W 64,5 mm
- L 1437 mm x H 20 mm x W 64,5 mm



PERFECT COMBINATION OF DESIGN AND TECHNICAL CONCEPT

# ALPHA LED LINEAR SYSTEM

## version with IP54 cover



### TECHNICAL SPECIFICATIONS OF THE CARRYING PROFILE AND WIRING:

Type	Length	Number of cables	Dimensions (L x W x H)	Wiring and module specification	Function	Weight
ALPHA - 1437B	1437 mm	5	1437 x 64,5 x 50 mm	1 x 1,5 m LED module, 5 x $\varnothing$ 2,5 mm wiring	basic	1,80 kg
ALPHA - 1437D	1437 mm	7	1437 x 64,5 x 50 mm	1 x 1,5 m LED module, 7 x $\varnothing$ 2,5 mm wiring	DALI	1,82 kg
ALPHA - 1437EM	1437 mm	11	1437 x 64,5 x 50 mm	1 x 1,5m LED module, 11 x $\varnothing$ 2,5 mm wiring	Emergency lighting	1,86 kg
ALPHA - 2874B	2874 mm	5	2875 x 64,5 x 50 mm	2 x 1,5 m LED module, 5 x $\varnothing$ 2,5 mm wiring	basic	3,40 kg
ALPHA - 2874D	2874 mm	7	2875 x 64,5 x 50 mm	2 x 1,5 m LED module, 7 x $\varnothing$ 2,5 mm wiring	DALI	3,42 kg
ALPHA - 2874EM	2874 mm	11	2875 x 64,5 x 50 mm	2 x 1,5 m LED modul, 11 x $\varnothing$ 2,5 mm wiring	Emergency lighting	3,46 kg





Variable connector interconnection of the carrying moulding profile significantly reduces the time required for installation. **JUST ONE CLICK** system enables quick exchange of the individual modules with optics and interconnection of the individual carrying moulding aluminium profiles without using any work tool.



X – connector



L – connector



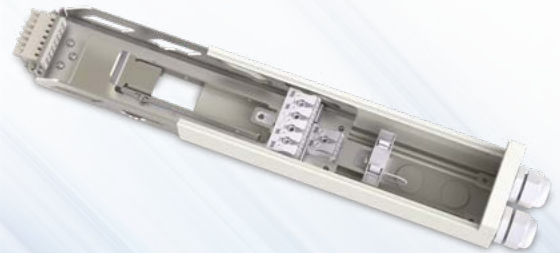
Module– the ending of the carrying moulding profile



Connector connection of the carrying moulding profile

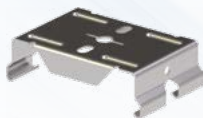


Module of the carrying moulding profile with connector



Module of connection to supply voltage  
220-240V/50Hz

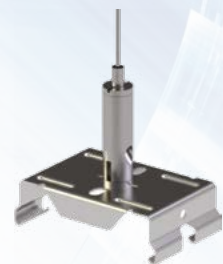
## INSTALLATION EQUIPMENT ATTACHMENT OF THE CARRYING MOULDING PROFILE:



Surface-mounted installation on ceiling or steel construction



Suspended installation on ceiling or steel construction



Suspended installation on ceiling or steel construction



Manufacturer - Supplier:  
**AlphaLighting CZ s.r.o.**  
Nám. T. G. Masaryka 1280  
760 01 Zlín  
Czech Republic  
Phone: +420 777 774 749  
+420 777 774 750  
Email: info@alphalighting.cz  
**www.alphalighting-led.com**

Business Representation Directorate:  
**AlphaLighting Trade Ltd.**  
Ivánska cesta 30/B  
821 04 Bratislava  
Slovak Republic  
Phone: +421 915 234 531  
+420 773 248 774  
Email: info@alphalighting-led.com  
**www.alphalighting-led.com**